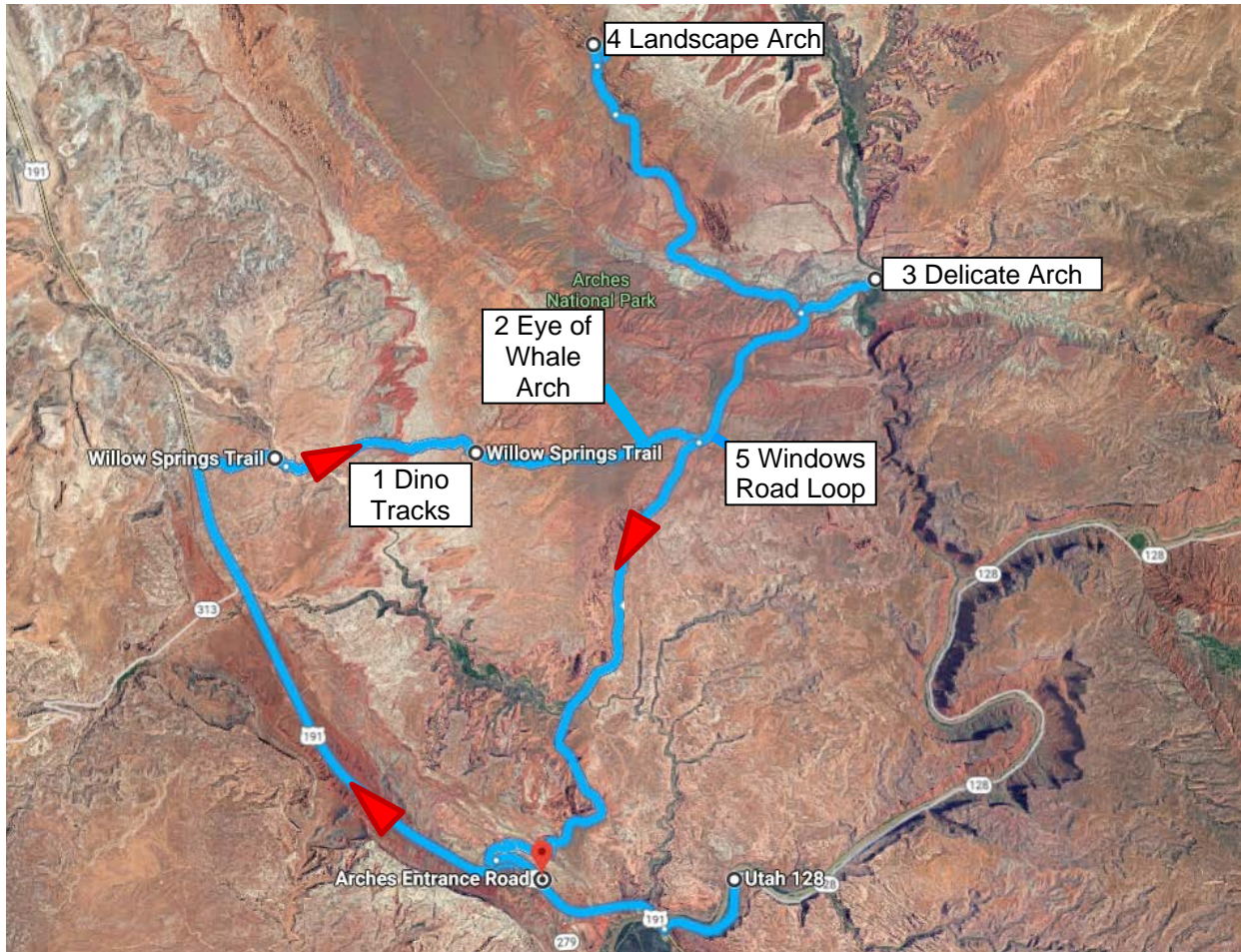


Willow Springs and Arches National Park

Route Highlights:

Willow Springs Dino Tracks Eye of the Whale Arch Delicate Arch Landscape Arch The Windows Road loop



Start: 9:00 AM

End: 5:00 PM

Total miles: 61.6

Paved Miles: 50.0
(12+ 3.9 +7.3 + 26.8)

Dirt Miles: 11.6
(3.4 + 8.2)

Leg 1

Camp Syncro to Willow Springs Jct

Miles
12.0 Miles

Google Time
13 Minutes

Stops
None

Time
20 minutes
9:00AM

9:20AM

Time of Day

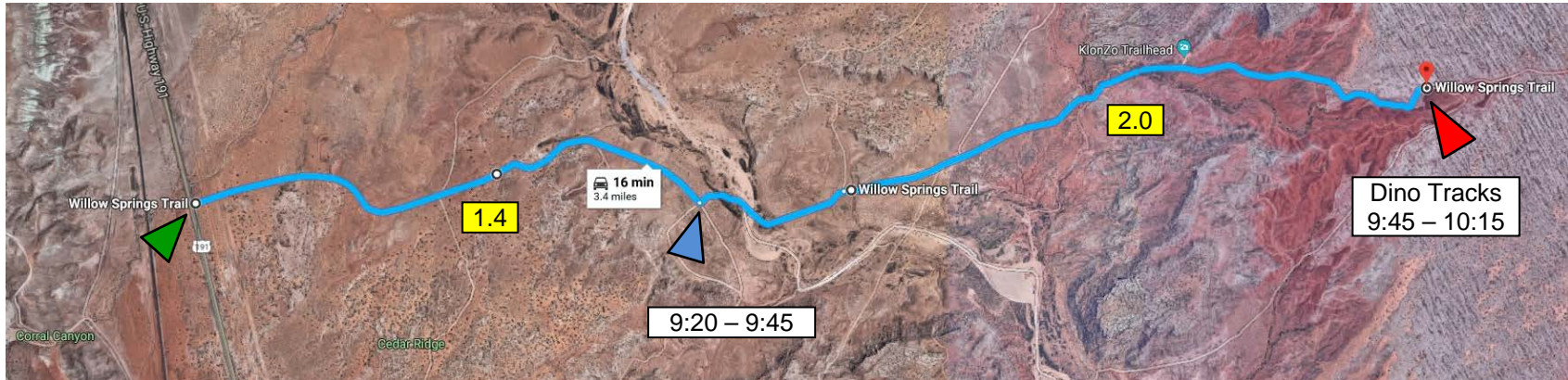


Segment	Miles	On	Start	End	Action
Camp Syncro to 191	1.6	128	0.0	1.6	Turn RIGHT (north)
128 to Willow Springs Jct	10.4	191	1.6	12.0	Turn LEFT (west)

RESET ODOMETER

Leg 2
 Willow Springs Jct to Dino Tracks

Miles	Google Time	Stops	Time
3.4 Miles	16 Minutes	None	25 minute
		Time of Day	9:20AM 9:45AM



Segment	Miles	On	Start	End	Action
1 East	1.4	WSR	0.0	1.4	Turn LEFT (northeast)
2 East	2.0	WSR	1.4	3.4	STOP - Dinosaur Tracks on right

RESET ODOMETER

STOP at Dinosaur Tracks 30 minutes

Time of Day	9:45AM	10:15AM
-------------	--------	---------

Leg 3

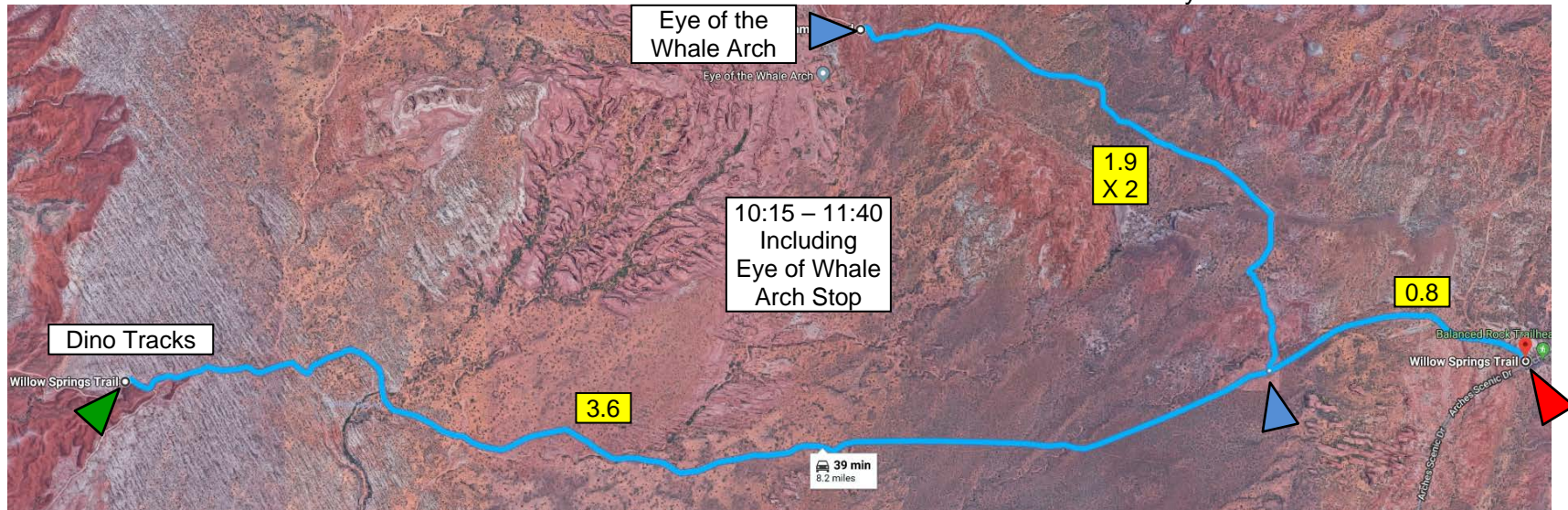
Tracks to Whale Eye & Arches Scenic Dr

Miles
8.2 Miles

Google Time
39 Minutes

Stops
Eye of Whale Arch
Time of Day

Time
1 hr 25 min
10:15AM 11:40AM



Segment	Miles	On	Start	End	Action	40 min 9:45 – 10:25
1 East	3.6	WSR	0.0	3.6	Turn LEFT (north)	
2 North	1.9	???	3.6	5.5	STOP - Eye of the Whale Arch on left	
STOP at Eye of the Whale Arch		30 minutes			Time of Day	10:25AM 10:55AM
3 South	1.9	???	5.5	7.4	Turn LEFT (east)	
4 East	0.8	WSR	7.4	8.2	Turn LEFT (north) on Arches Scenic Drive	11:40

RESET ODOMETER

Leg 4

Willow Springs Rd to Delicate Arch Parking 3.9 Miles

Google Time

7 Minutes

Stops

None

Time

15 minutes

Time of Day

11:40AM

11:55AM



Segment	Miles	On	Start	End	Action
1 Northeast	2.6	Arches Scenic Dr	0.0	2.6	Turn RIGHT (east)
2 East	1.2	Delicate Rd	2.6	3.9	STOP - Parking lot on left

RESET ODOMETER

Options:

A. Hang out here and have a long lunch

B. Take the strenuous hike to Delicate Arch. 3 miles roundtrip – 2 hours. Those hiking to the arch (not the viewpoint) will need to leave immediately and eat their lunch on the way. There is not time for both a leisurely lunch and the hike.

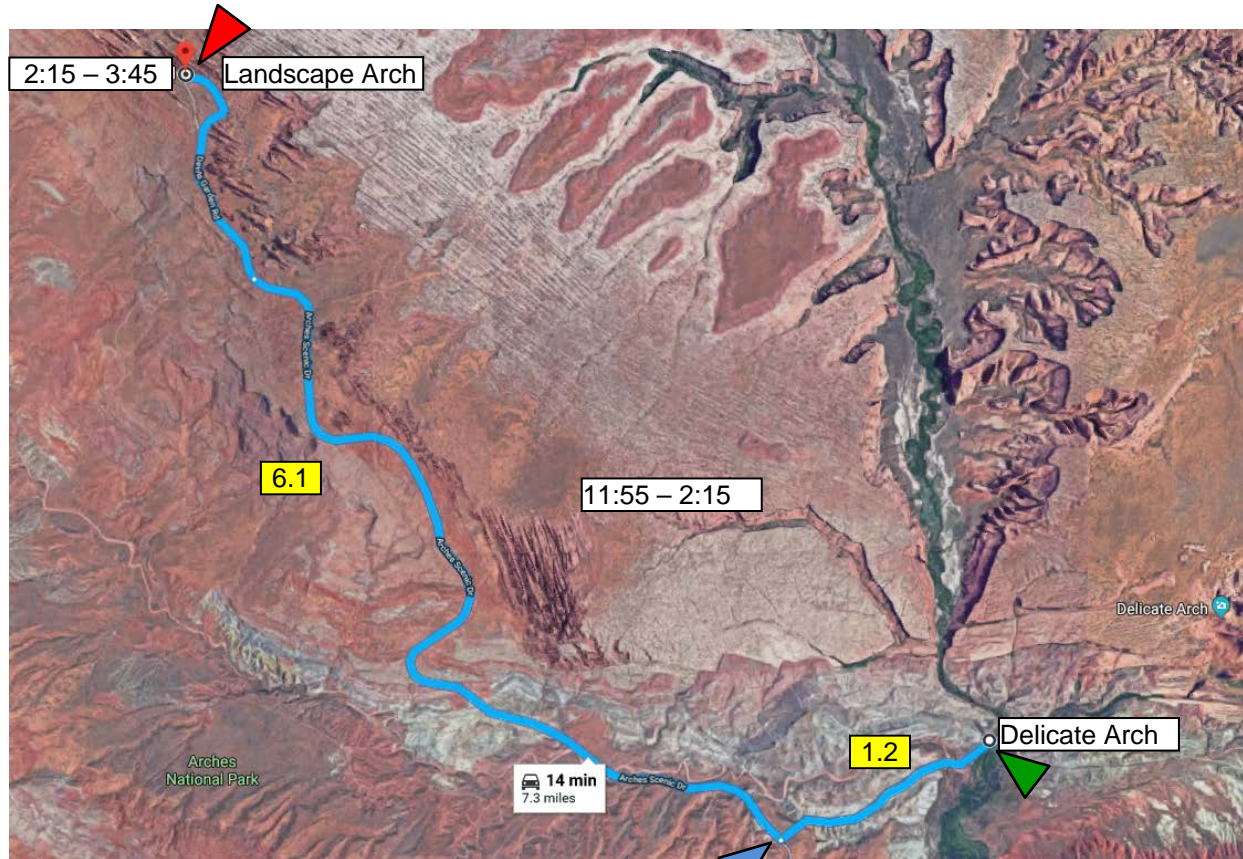
C. Drive 1 mile further up Delicate Arch Rd, park in next lot. Take 100 yd to 0.5 mile walks to Delicate Arch viewpoints

Stop time in Delicate Arch area: 2 hours to have lunch and hike.

11:55AM to 1:55PM

Leg 5

Delicate Arch Parking to Landscape Arch

Miles
7.3 Miles**Google Time**
14 Minutes**Stops**
None
Time of Day**Time**
20 minutes
1:55PM 2:15PM

Segment	Miles	On	Start	End	Action
1 West	1.2	Delicate Rd	0.0	1.2	Turn RIGHT (northwest)
2. Northwest	6.1	Arches Scenic Dr	1.2	7.3	Stop & Park

RESET ODOMETER

Options:

- A. Hang out here and enjoy the views
- B. Take the easy hike to Landscape Arch. 1.5 miles roundtrip – 60 minutes.
- C. Separate from the group and continue past Landscape up to Devil's Garden. 5.7 miles additional past Landscape Arch
7.2 miles and about 4 hours roundtrip from the parking area.

Stop time in Landscape Arch area: 1.5 hours to see this area and hike to Landscape Arch**2:15PM to 3:45PM**

Leg 6

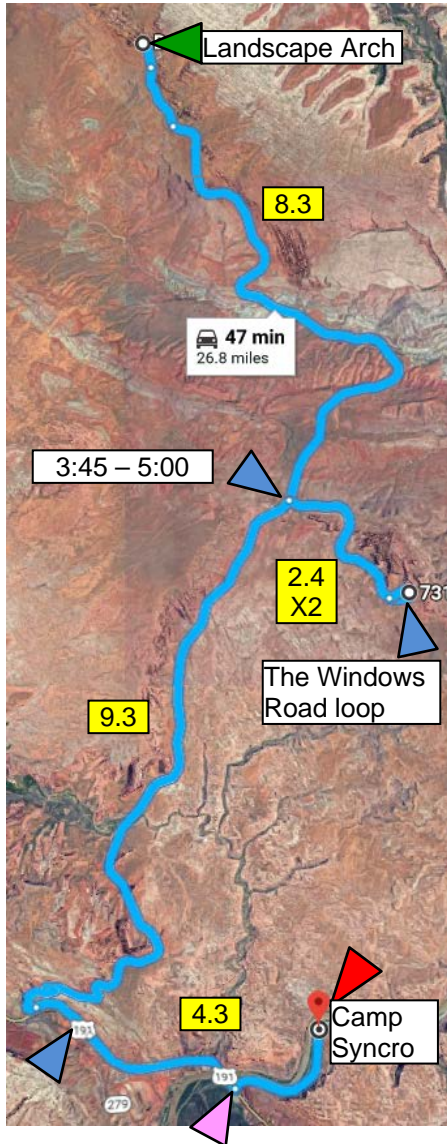
Landscape Arch to Camp Syncro (Goose Island)

Miles
26.8 Miles

Google Time
47 Minutes

Stops
None
Time of Day

Time
1 hr 15 min
3:45PM 5:00PM



Segment	Miles	On	Start	End	Action
1 South	8.3	Arches Scenic Dr	0.0	8.3	Turn LEFT (northwest)
2 East / southeast to WR	2.4	Windows Road Loop	8.3	10.7	Stop somewhere
3 Northwest to ASD	2.4	Windows Road Loop	10.7	13.1	Turn LEFT
4 South to NP Entrance Stn	9.3	Arches Scenic Loop	13.1	22.4	Exit Arches NP
5 South and east	4.3	Hwy 191 and 128	22.4	26.7	STOP at Camp Syncro

Expect to stop somewhere along The Windows Road loop to check out the rocks & views

Rest