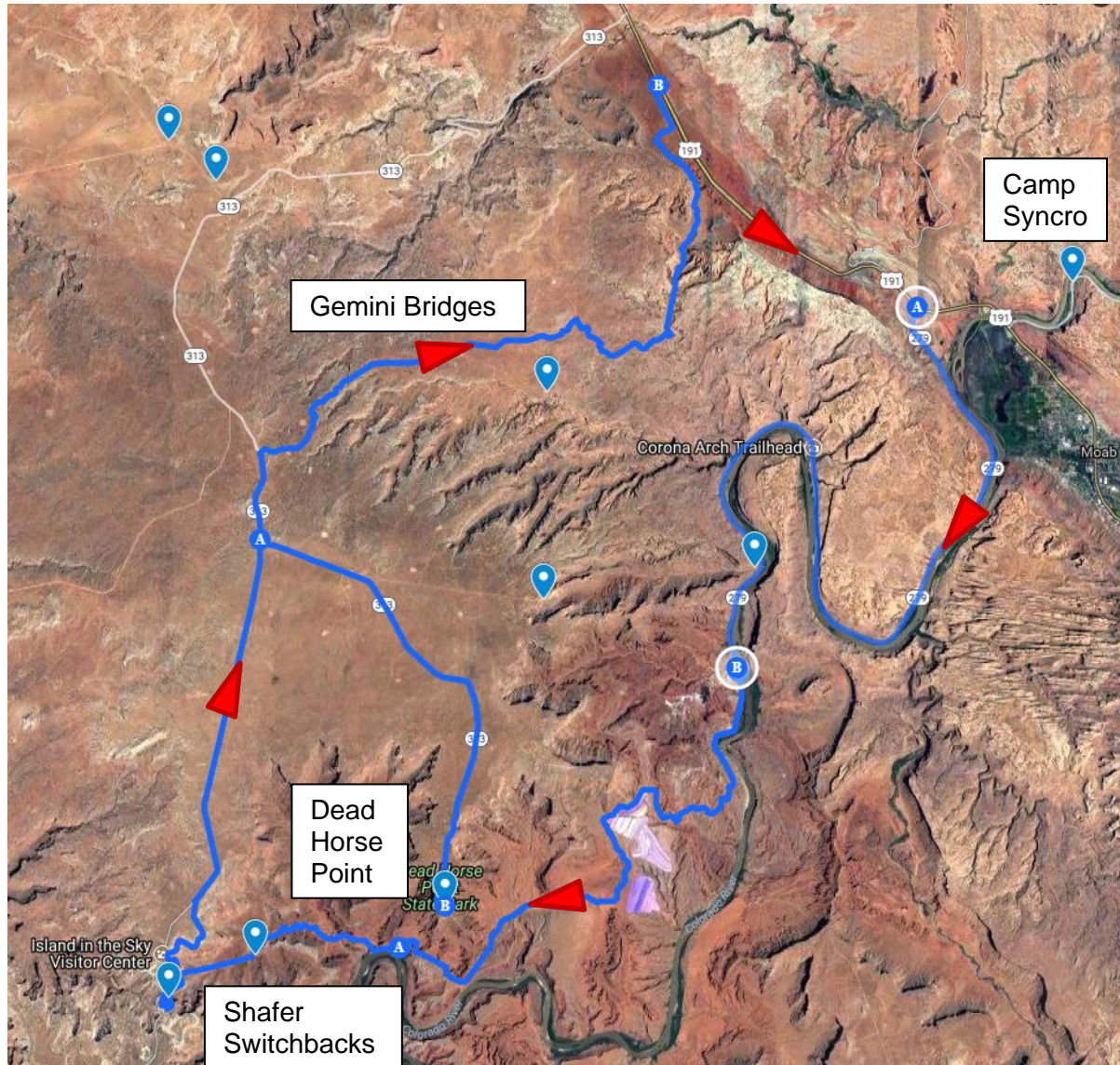


Potash, Shafer Switchbacks, Dead Horse and Gemini Bridges

Route Highlights: Potash Road Shafer Switchbacks Dead Horse Point Gemini Bridges



Start: 8:00 AM

End: 5:30 PM

Total miles: 83.2

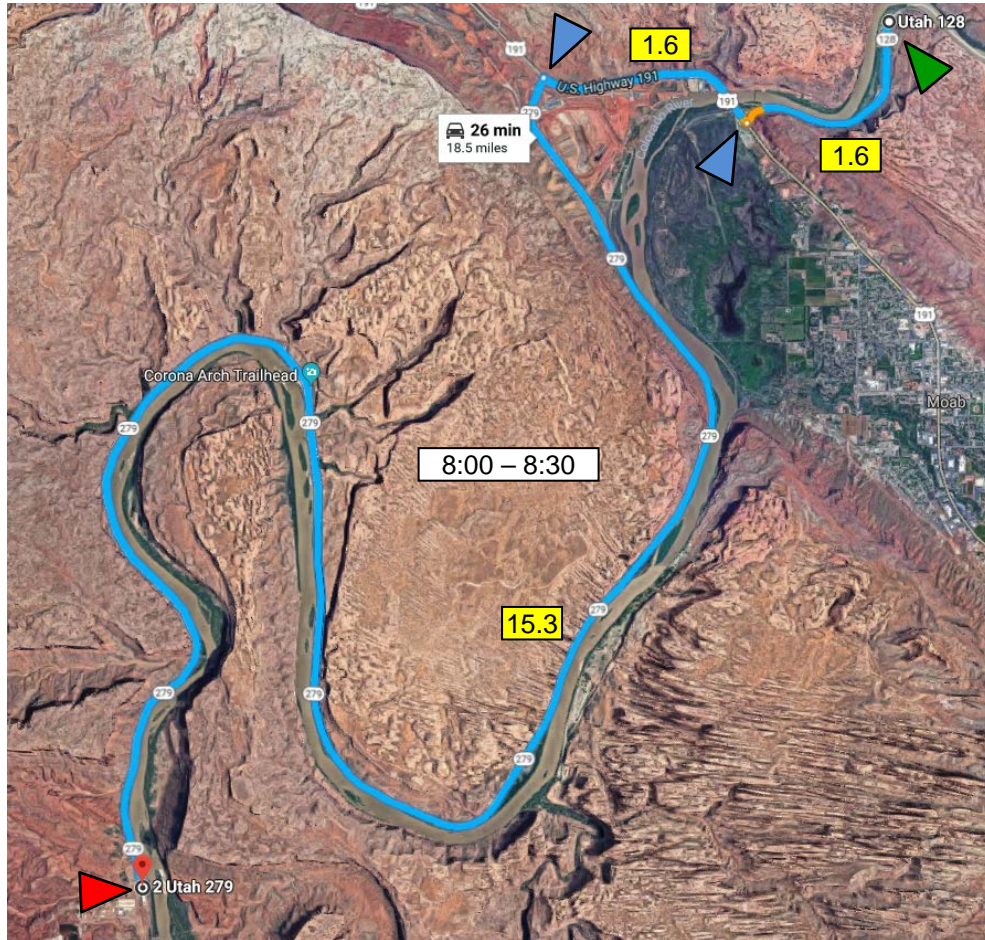
Paved Miles: 50.8

(18.5 + 13.8 + 9.5 + 9.0)

Dirt Miles: 32.4

(16.1 + 3.4 + 5.5 + 7.4)

Leg 1	Miles	Google Time	Stops	Time
Camp Syncro to Potash Mine	18.5 Miles	26 Minutes	None	30 minutes



Time of Day: 8:00AM 8:30AM

Segment	Miles	On	Start	End	Action
Goose to 191	1.6	128	0	1.6	Turn RIGHT
128 to 279	1.6	191	1.6	3.2	Turn RIGHT
191 to 142	15.3	279	3.2	18.5	Turn LEFT

RESET ODOMETER

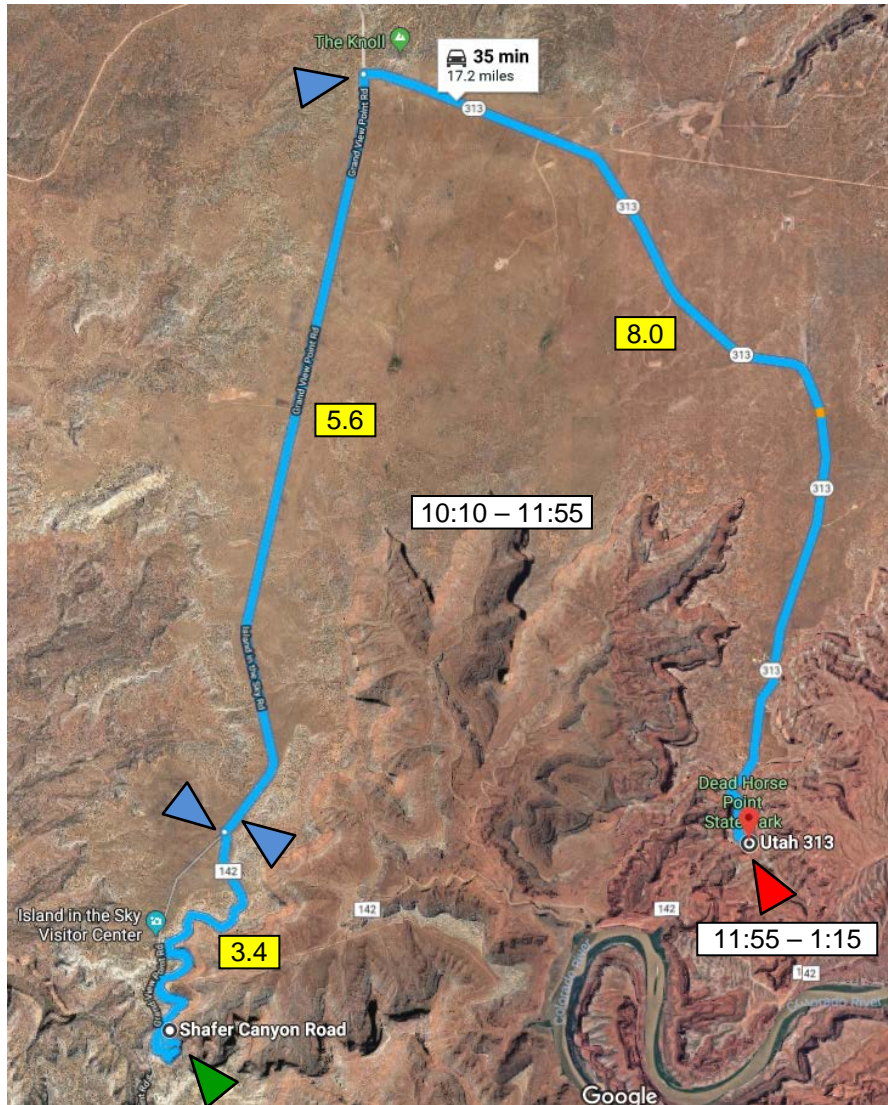
Leg 2	Miles	Google Time	Stops	Time
Potash Mine to Shafer Switchbacks	16.1 Miles	1 hr 14 Min	Views (+25 mins)	1hr 40min 8:30AM 10:10AM



Segment	Miles	On	Start	End	Action
Start with RIGHT ON 142 Potash Road					
279 – 4-way Junction	3.4	Potash	0.0	3.4	Turn RIGHT
142-Shafer Cyn	10.6	Potash / 142	3.4	14.0	Turn LEFT
Stop – Toilet on Right					Go LEFT (west) leaving toilet
Toilet to straight after 1 st R switchback	1.9	Shafer	14.0	15.9	STRAIGHT (no junction)

RESET ODOMETER at this rather random spot near the beginning of the switchbacks

Leg 3	Miles	Google Time	Stops	Time
Shafer Switchbacks to Dead Horse View	17.2 Miles	35 Minutes	Views (30 min) Toilet (20 min)	1hr 45min
			Time of Day	10:10AM 11:55AM

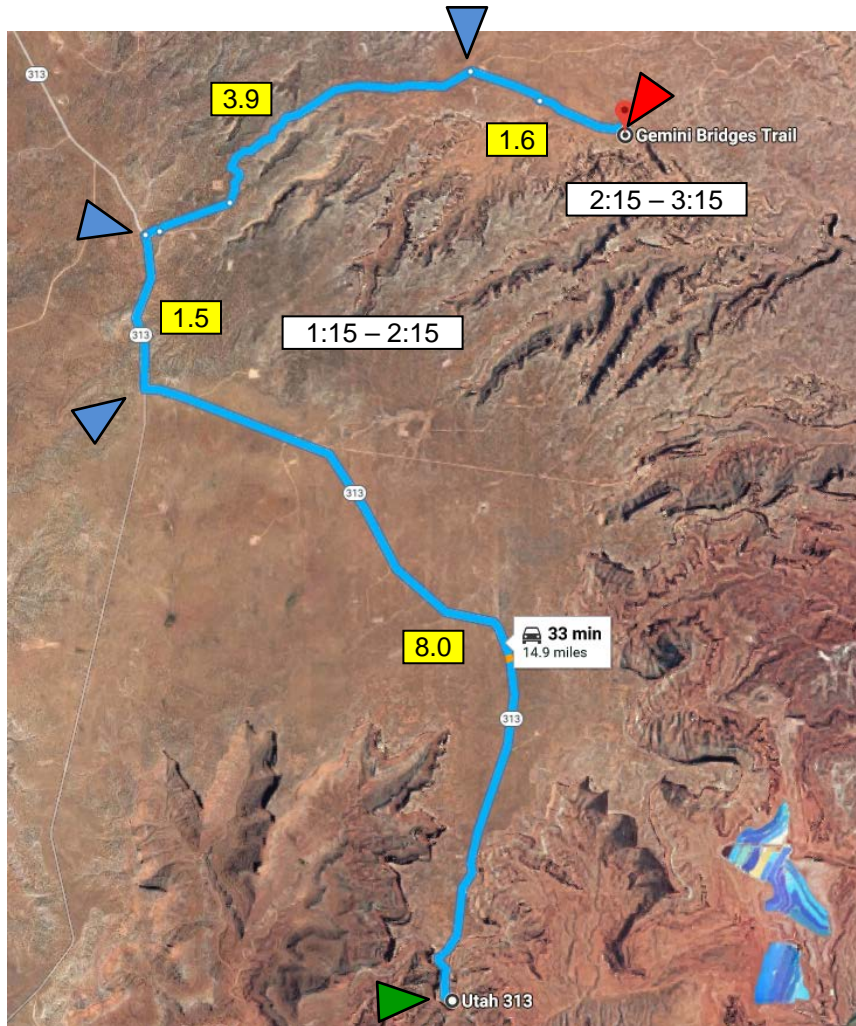


<u>Segment</u>	<u>Miles</u>	<u>On</u>	<u>Start</u>	<u>End</u>	<u>Action</u>
Switchback to Dead Horse Point to Grand View/ Island Sky Rd	3.4	Shafer 142	0.0	3.4	RIGHT
Grandview to park entrance station	0.2	Grandview	3.4	3.6	Toilet – Rt
Stop at toilet					
Toilet to 313	5.6	Grandview	3.6	9.2	Right
Grandview to Dead Horse Point Lookout	8.0	313	9.2	17.2	Stop

RESET ODOMETER

LUNCH STOP at Dead Horse View Point 1hr 20min
 Time of Day 11:55AM – 1:15PM

Leg 4	Miles	Google Time	Stops	Time
Dead Horse to Gemini Bridges	14.9 Miles	33 Minutes	Views (15 min) Time of Day	1hr 00min 1:15PM 2:15PM



Segment	Miles	On	Start	End	Action
Lunch to Grandview	8.0	313	0.0	8.0	Turn RIGHT
Jct to Gemini Trail	1.5	313	8.0	9.5	Turn RIGHT
313 to Metal Masher	3.9	GB Tr	9.5	13.4	Turn RIGHT
Jct to GB Jct	1.6	GB Tr	13.4	15.0	Turn RIGHT

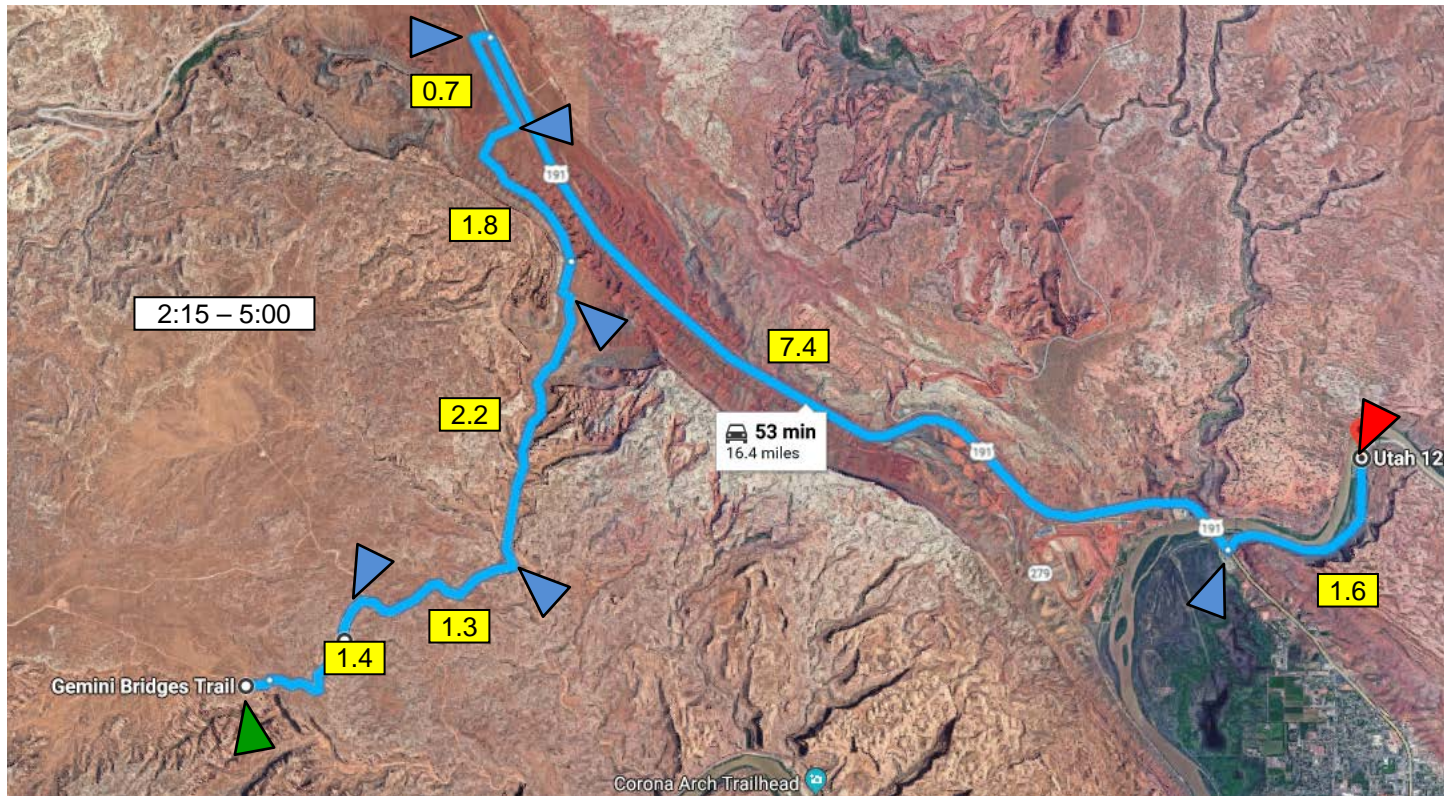
Gemini Bridges parking ahead 400 ft

RESET ODOMETER

STOP at Gemini Bridges 1hr

Time of Day 2:15PM – 3:15PM

Leg 5	Miles	Google Time	Stops	Time
Gemini Bridges to Camp Syncro	16.4 Miles	52 Minutes	Views (15 min) Time of Day	1hr 45min 3:15PM - 5:00PM



Segment	Miles	On	Start	End	Action
Gemini Bridges to Jct on left	1.4	Gemini Tr	0.0	1.4	Straight
Jct on left to Jct on Right	1.3	Gemini Tr	1.4	2.7	Straight
Jct on Right to Jct on Right	2.2	Gemini Tr	1.7	4.9	Straight
Jct on Right to T-Junction	1.8	Gemini Tr	3.9	6.7	Turn LEFT
T-Jct to another T-Junction	0.7	Gemini Tr	5.7	7.4	Turn RIGHT, then RIGHT again onto 191 south toward Moab
Entrance to 191 to 128	7.4	191	6.4	14.8	Turn LEFT on 128
191 to Goose Island	1.6	128	13.8	16.4	Camp Syncro – Rest!